

State of Wyoming Corner Record

(In compliance with the **CORNER PERPETUATION AND FILING ACT**, Wyoming Statutes, 1997 Section 33-29-140 et. seq., and the Rules and Regulations of the Board of Professional Engineers and Professional Land Surveyors)

Revised 1/19/2010

Reverse side of this form may be used if more space is needed.

Record of original survey and citation of source of historical information (if corner is lost or obliterated). Description of corner monumentation evidence found and/or monument and accessories established to perpetuate the location of this corner. Sketch of relative location of monument, accessories, and reference points with course and distance to adjacent corner(s) (if determined in this survey). Method and rationale for reestablishment of lost or obliterated corner.

FOUND: FOUND 2 1/2 IN ALUMINUM CAP STAMPED S4/S9/S10 (POSITION WHERE S3 SHOULD BE OBLITERATED BY POSSIBLE HAMMER BLOW) - PLS 9063 - 2008 BLM DEPENDENT RESURVEY HAS ACCEPTED THIS MONUMENT AS PERPETUATING TRUE SW CORNER OF SECTION 3

SET: (2007) SET 3/4" ALUMINUM CAP ON 3/4"x30" REBAR INSCRIBED AVI PC WY PLS NO. 555 STAMPED DURING THE 2007 SURVEY WITH THE FILED CORNER RECORD DATE OF 3/19/2008.

REMOVED: TO PROMOTE AGREEMENT WITH THE BLM'S 2008 DEPENDENT RESURVEY THE 2007 SET 3/4" ALUMINUM CAP ON 3/4"x30" REBAR INSCRIBED AVI PC WY PLS NO. 555 AT THIS LOCATION HAS BEEN REMOVED.

NOTE:

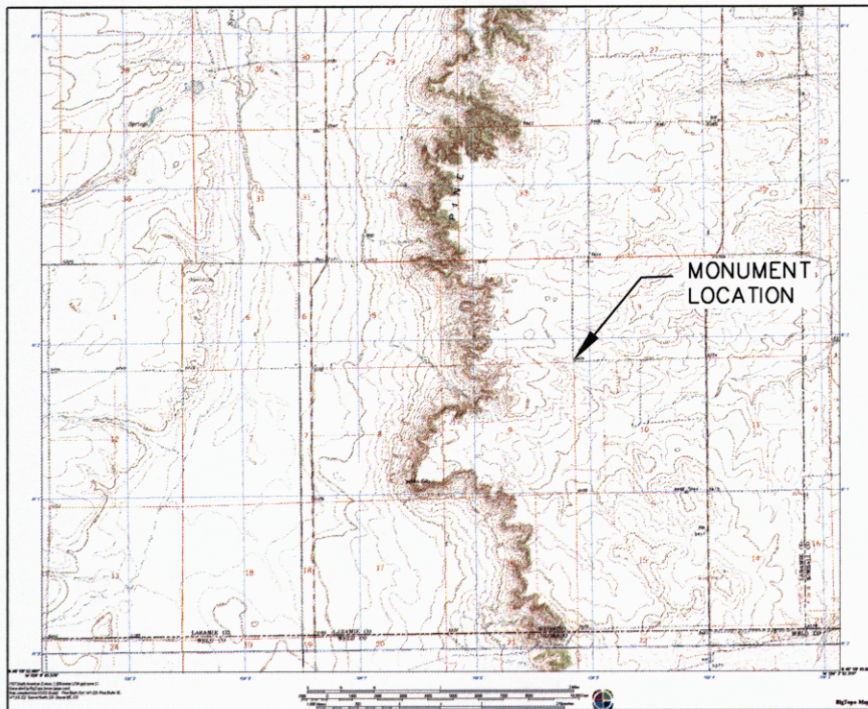
- 1) THIS CORNER RECORDATION FORM IS BEING FILED TO CORRECT THE CORNER RECORDATION FORM SIGNED 9-25-07. THE SUBJECT MONUMENT HAS BEEN ACCEPTED AS PERPETUATING THE ORIGINAL CORNER LOCATION AS DISCUSSED ABOVE.
- 2) THE PLS 555 CORNER HAS SINCE BEEN REMOVED TO AVOID CREATING CONFLICTING EVIDENCE.
- 3) FOR ADDITIONAL INFORMATION ON THIS CORNER SEE MAP OF SURVEY FOR T12N R60W AND A PORTION OF T13N R60W ON FILE AT THE LARAMIE COUNTY CLERK'S OFFICE IN SURVEY CABINET 4 MAP 29 AND BOOK2149 PAGE 59
- 4) SEE ATTACHED PHOTOS FOR ADDITIONAL DETAILS



**Monument Inscription
(Accepted)**



Monument Removed



Monument location

Date of Field Work: 6/5/2007 § 1-21 2010 Office Reference: 2655

Cross Index Plat

Firm/Agency, Address

This corner record was prepared by me or under my direction and supervision.

AVI P.C.
1101 OLD TOWN LANE SUITE 101
CHEYENNE, WY. 82009

SEAL & SIGNATURE

Telephone Number: 307-637-6017

1	2	3	4	5	6	7	8	9	10	11	12	13	14	15	16	17	18	19	20	21	22	23	24	25	
A	+	+	+	+	+	+	+	+	+	+	+	+	+	+	+	+	+	+	+	+	+	+	+	+	A
B	+	6	+	5	+	4	+	3	+	2	+	1	+	+	+	+	+	+	+	+	+	+	+	+	B
C	+	+	+	+	+	+	+	+	+	+	+	+	+	+	+	+	+	+	+	+	+	+	+	+	C
D	+	+	+	+	+	+	+	+	+	+	+	+	+	+	+	+	+	+	+	+	+	+	+	+	D
E	+	+	+	+	+	+	+	+	+	+	+	+	+	+	+	+	+	+	+	+	+	+	+	+	E
F	+	+	+	+	+	+	+	+	+	+	+	+	+	+	+	+	+	+	+	+	+	+	+	+	F
G	+	7	+	8	+	9	+	10	+	11	+	12	+	+	+	+	+	+	+	+	+	+	+	+	G
H	+	+	+	+	+	+	+	+	+	+	+	+	+	+	+	+	+	+	+	+	+	+	+	+	H
J	+	+	+	+	+	+	+	+	+	+	+	+	+	+	+	+	+	+	+	+	+	+	+	+	J
K	+	+	+	+	+	+	+	+	+	+	+	+	+	+	+	+	+	+	+	+	+	+	+	+	K
L	+	18	+	17	+	16	+	15	+	14	+	13	+	+	+	+	+	+	+	+	+	+	+	+	L
M	+	+	+	+	+	+	+	+	+	+	+	+	+	+	+	+	+	+	+	+	+	+	+	+	M
N	+	+	+	+	+	+	+	+	+	+	+	+	+	+	+	+	+	+	+	+	+	+	+	+	N
O	+	+	+	+	+	+	+	+	+	+	+	+	+	+	+	+	+	+	+	+	+	+	+	+	O
P	+	19	+	20	+	21	+	22	+	23	+	24	+	+	+	+	+	+	+	+	+	+	+	+	P
Q	+	+	+	+	+	+	+	+	+	+	+	+	+	+	+	+	+	+	+	+	+	+	+	+	Q
R	+	+	+	+	+	+	+	+	+	+	+	+	+	+	+	+	+	+	+	+	+	+	+	+	R
S	+	+	+	+	+	+	+	+	+	+	+	+	+	+	+	+	+	+	+	+	+	+	+	+	S
T	+	30	+	29	+	28	+	27	+	26	+	25	+	+	+	+	+	+	+	+	+	+	+	+	T
U	+	+	+	+	+	+	+	+	+	+	+	+	+	+	+	+	+	+	+	+	+	+	+	+	U
V	+	+	+	+	+	+	+	+	+	+	+	+	+	+	+	+	+	+	+	+	+	+	+	+	V
W	+	+	+	+	+	+	+	+	+	+	+	+	+	+	+	+	+	+	+	+	+	+	+	+	W
X	+	31	+	32	+	33	+	34	+	35	+	36	+	+	+	+	+	+	+	+	+	+	+	+	X
Y	+	+	+	+	+	+	+	+	+	+	+	+	+	+	+	+	+	+	+	+	+	+	+	+	Y
Z	1	2	3	4	5	6	7	8	9	10	11	12	13	14	15	16	17	18	19	20	21	22	23	24	25



Corner Name SW Corner Section 3, T 12 N, R 60 W, 6th P.M.
County: LARAMIE Wyoming

Cross-Index No.: E-13

RECORDED 2/10/2010 AT 2:17 PM REC# 538985 BX# 2150 PG# 4262
DEBRA K. LATHROP, CLERK OF LARAMIE COUNTY, WY PAGE 1 OF 2



View North



View East



View South



View West

Corner Name SW Corner Section 3, T 12 N, R 60 W, 6th P.M.

